



Wallcovering special

*The ideal wallcovering for
walls where high resistance
is needed*



Gurimur AG
Chaltenbodenstrasse 6
CH-8834 Schindellegi / Switzerland

+41 44 787 83 83
stephan.egger@gurimur.ch

Stephan Egger





Subjects

- Gurimur AG, Schindellegi / Switzerland
- Hospital infection – Frequency and causes
- Hygiene instructions and recommendations for the hospital
- The wall in a hospital / Laboratory / Clean room
- Prices
- Application
- Design and special colours
- Uses of Gurimur®
- Principals and aims

Gurimur AG, Schindellegi

Gurimur AG used to be part of the Gurit group.

Since 1989 the company is independent and supplies customers all over the world with high-quality wallcovering for the project market.

Owner and CEO is Stephan Egger.

The premises are in Schindellegi / Canton Schwyz



Hospital infections – Facts

Hospital infections in Switzerland Evaluation per year (*state 2005*)

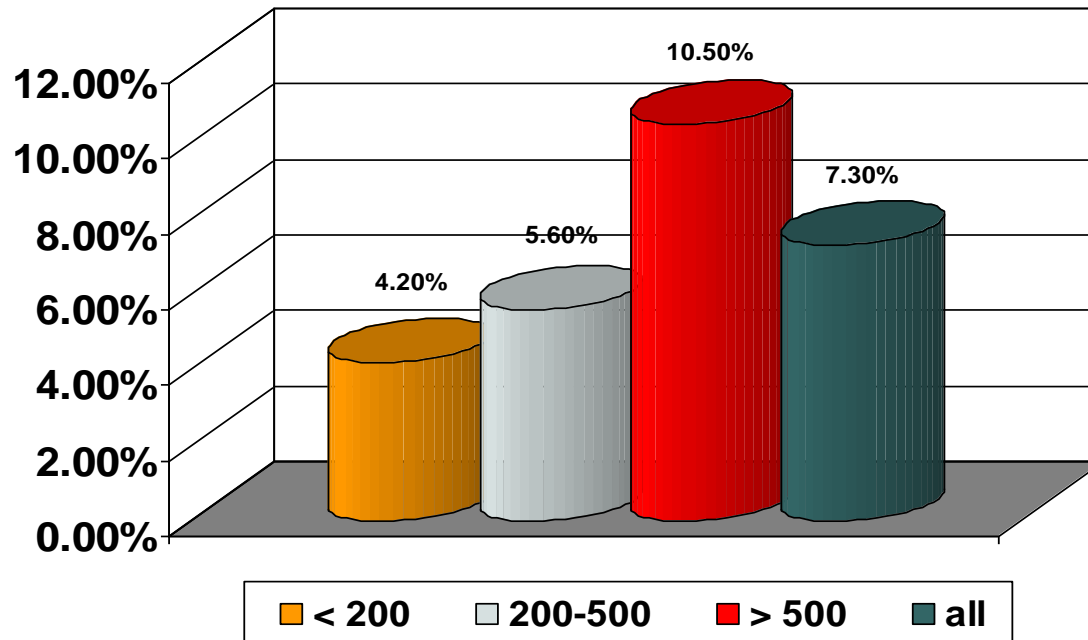
- Infected patients: 70'000
- Added costs (CHF): 250 Millions
- Added days in hospital: 300'000
- Deaths: 2'000

Hospital infections – Facts

| % | |
|---|-------|
| Patients in hospitals with hospital infection | |
| Adults | 7,3 % |
| Children | 6.7 % |

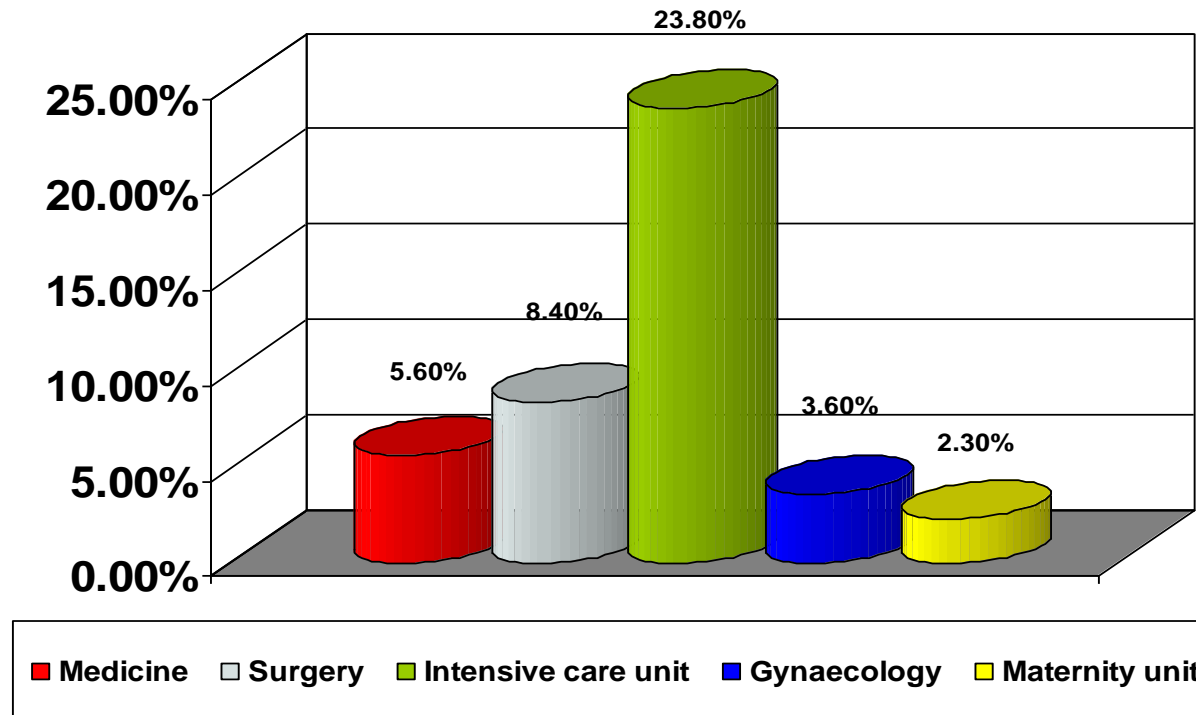
Hospital infections – Facts

Infections according to hospital size



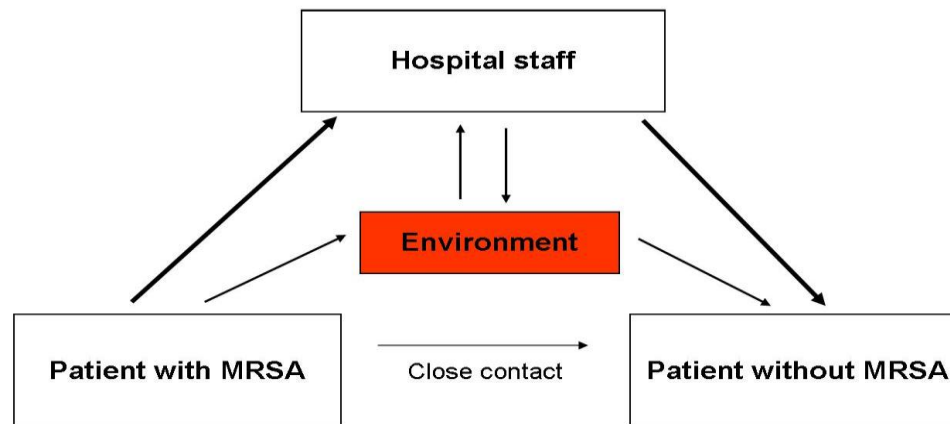
Hospital infections – Facts

Infections according to hospital sections



Ways of transmission of infections in a hospital

The environment in a hospital is an essential factor for infections!



Reservoirs for infection centres

Besides patients, hospital staff and instruments the environment is a very important reservoir for the spreading of infections.



The critical environment includes:

Telephone

TV remote

Bell

Door handle

Light switch

Walls



Why are walls important ?

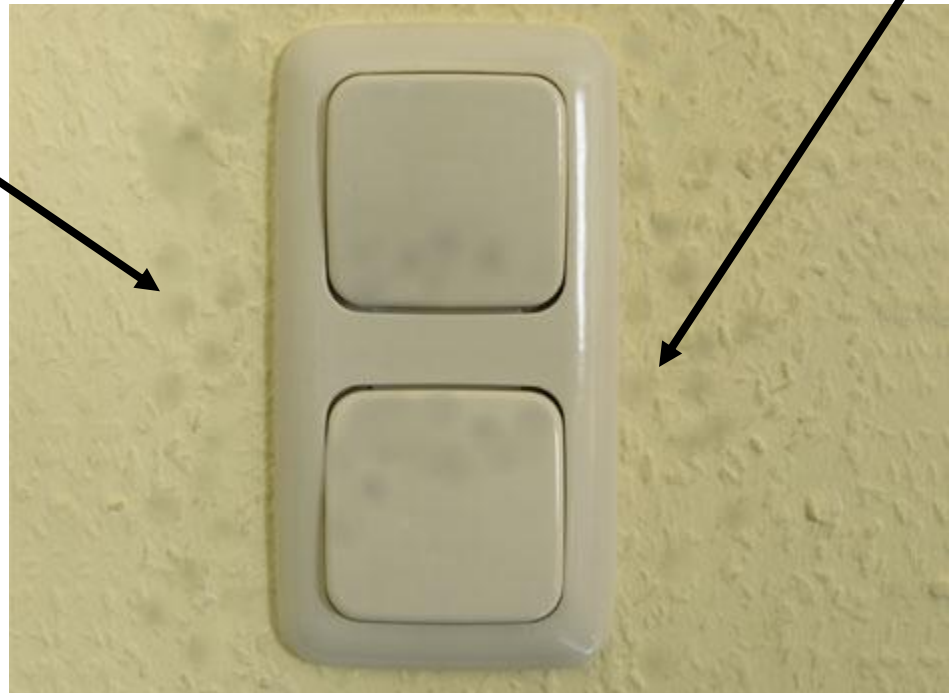


Patients, hospital staff and visitors touch one after another critical wall sections. By that they can leave germs which can later on be transmitted to patients.

Dirty walls are not only an optical problem. They need to be cleanable and disinfectable.

Which wall sections can be especially dangerous?

e.g.
Sections around
switches, doors, handles etc.



Where are the most delicate sections?

e.g..

- On the way from the bed to the bathroom
- In the bathroom
- In the hallway

Because patients support themselves against the same spots all the time.

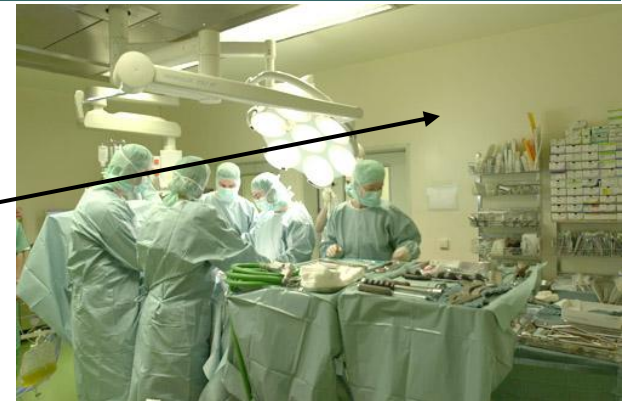


After which criterion do I choose the wallcovering?

Highest security sections:

Gurimur® TEDLAR® and TEDLAR® PLUS

- Operation theatres
- Emergency room
- Intensive care unit
- Laboratories
- Adjoining rooms with sinks etc.
- Bathrooms



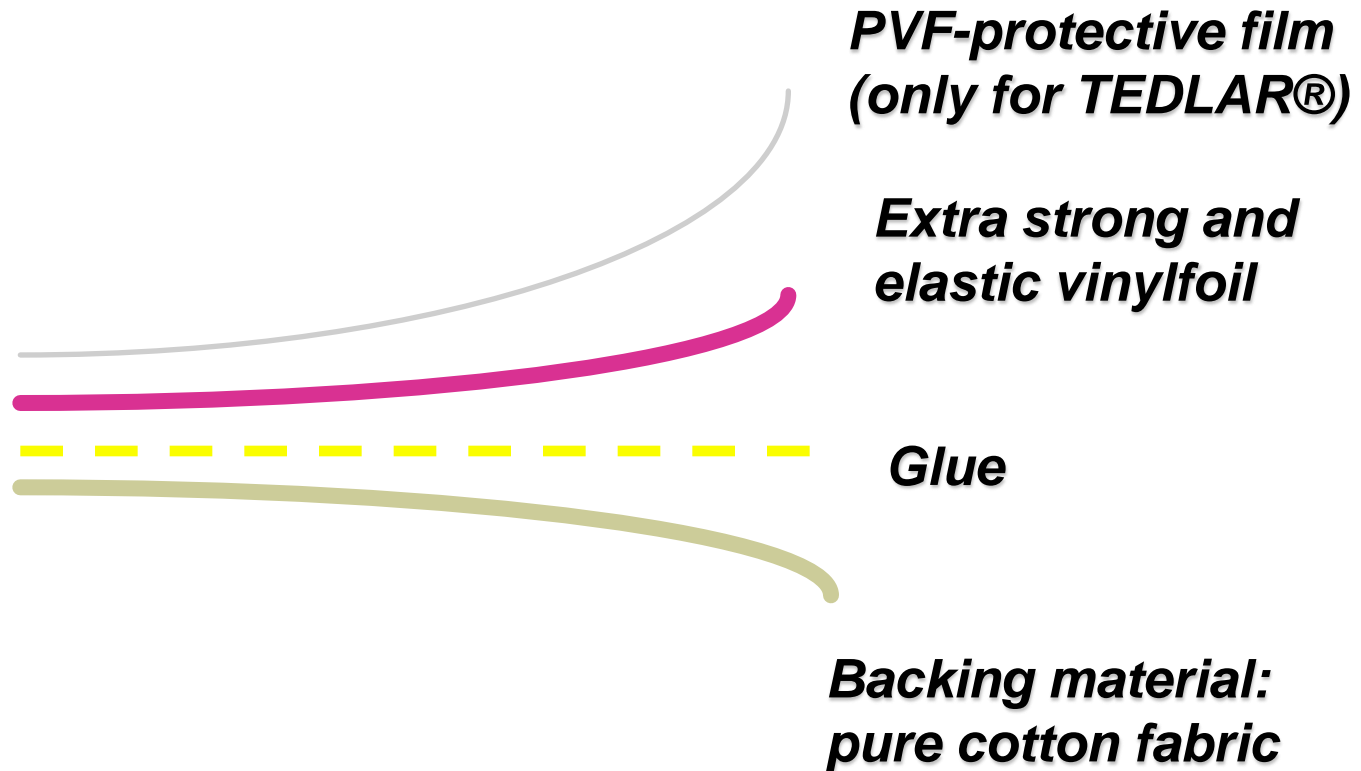
Middle security sections

Gurimur® S

- Patient rooms
- Hallways



Composition of Gurimur® wallcoverings



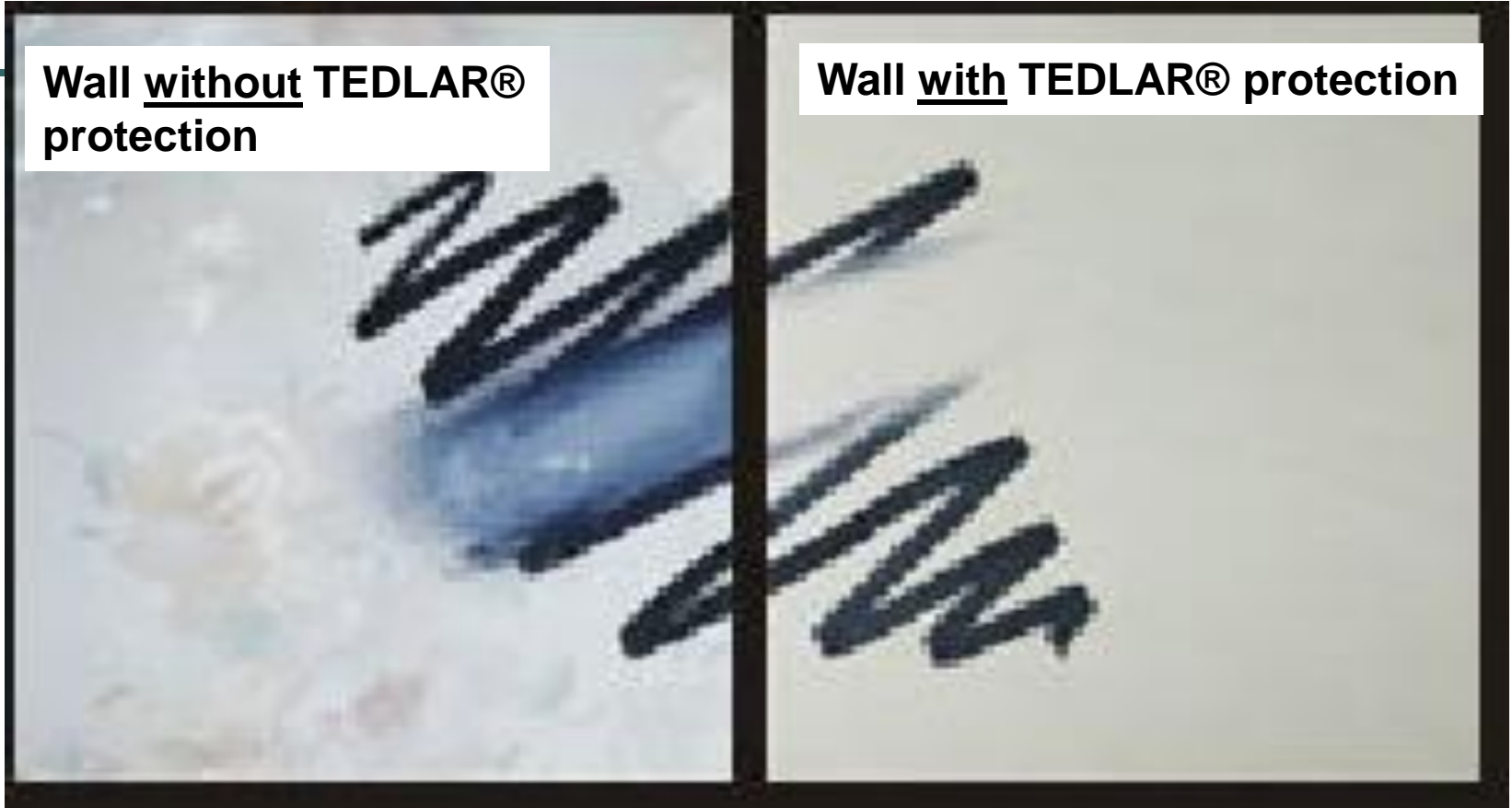
Production of Gurimur®



Cleaning of Gurimur® TEDLAR®

Wall without TEDLAR® protection

Wall with TEDLAR® protection



Stain resistance of Gurimur® TEDLAR®

Staining agents were applied to the film, allowed to dry for 24 hours, and then removed. Listed is the strongest agent required to remove the stain.

Key

- 0 = Dry paper towel
- 1 = Damp paper towel
- 2 = Mild soap and water
- 3 = «Lestoil» heavy duty cleaner
- 4 = Scrubbing agent and water
- 5 = Solvent (Toluene)

| | |
|-------------------------------------|---|
| Acetic Acid 5% | 0 |
| Acetone | 0 |
| Alcohol | 0 |
| Ammonia (10%) | 0 |
| Amyl acetate | 1 |
| Beet juice | 1 |
| Bromocresol green in methyl alcohol | 1 |
| Carbon tetrachloride | 0 |
| Catsup | 2 |
| Chocolate syrup | 1 |
| Cigarette smoke | 1 |
| Citric acid (10%) | 1 |
| Coffee | 1 |
| «Dreft» detergent | 1 |
| Dye (clothes) | 1 |
| Dye (hair) | 1 |
| Fluorescin sodium | 1 |
| Gasolene | 0 |
| Grape juice | 1 |

| | |
|-------------------------|---|
| Grease | 2 |
| Hair oil | 2 |
| Hand soap | 1 |
| Hydrochloric acid 5% | 0 |
| Hydrogen peroxide (30%) | 0 |
| Hypochlorite bleach | 1 |
| Ink (ball pen) | 3 |
| Ink (markin pen) | 3 |
| Ink (stamp pad) | 1 |
| Ink (washable) | 1 |
| Insect spray (Raid) | 2 |
| Insect spray | 2 |
| Iodine | 4 |
| Jam, jelly | 1 |
| Lard | 0 |
| Lipstick | 3 |
| Lye solution | 1 |
| Mercurochrome | 2 |
| Merthiolate | 1 |

| | |
|-------------------------------------|---|
| Methyl purple | 1 |
| Methyl red | 1 |
| Methylene blue in phenol indicator | 1 |
| Milk | 1 |
| Moth spray | 1 |
| Motor oil | 2 |
| Mustard | 1 |
| Nail polish | 5 |
| Nitric acid (5%) | 0 |
| Olive oil | 2 |
| Pencil | 1 |
| Permanent eyelash darkener | 1 |
| Phenol (5%) | 1 |
| Phenol blue | 1 |
| Phenol red (1%) | 1 |
| Potassium permanganate in water 10% | 1 |
| Salad dressing | 1 |
| Shoe polish | 2 |
| Silver nitrate | 2 |

| | |
|------------------------|---|
| Silver protein | 1 |
| Sodium bisulphate | 1 |
| Sodium bisulphite | 1 |
| Sulphuric acid (5%) | 0 |
| Synthetic perspiration | 1 |
| Tea | 2 |
| Tomato juice | 2 |
| Trisodium phosphate | 1 |
| Turpentine | 2 |
| Urea | 1 |
| Urine (canine) | 1 |
| Vinegar | 1 |
| «Vitalis» hair oil | 2 |
| Water | 0 |
| «Wright» blood stain | 2 |

Chemical resistance of Gurimur® TEDLAR®

TEDLAR® has been tested against the chemicals listed below.
No basic changes were determined with regard to impact toughness,
tensile strength or elongation to break.

Acids

| | |
|-------------------------|--------------------------------------|
| Acetic acid (glacial) | 1-year immersion at room temperature |
| Acetic acid (glacial) | 31 days, 75°C |
| Acetic acid (4%) | 168 hours at boil |
| Hydrochloric acid (10%) | 1-year immersion at room temperature |
| Hydrochloric acid (10%) | 2 hours at Boil |
| Hydrochloric acid (10%) | Steam at 105°C, 1 week |
| Hydrochloric acid (30%) | 31 days, 75°C |
| Nitric acid (20%) | 1-year immersion at room temperature |
| Nitric acid (10% / 40%) | 31 days, 75°C |
| Perchloric acid (60%) | 25 days at room temperature |
| Phosphoric acid (20%) | 1-year immersion at room temperature |
| Sulphuric acid (20%) | 1-year immersion at room temperature |
| Sulphuric acid (30%) | 31 days, 75°C |

Bases

| | |
|--------------------------------|--------------------------------------|
| Ammonium hydroxide (12% / 39%) | 1-year immersion at room temperature |
| Ammonium hydroxide (10%) | 31 days, 75°C |
| Sodium hydroxide (10%) | 1-year immersion at room temperature |
| Sodium hydroxide (10% / 54%) | 31 days, 75°C |
| Sodium hydroxide 10% | 2 hours at boil |

Solvents

| | |
|---------------------|--------------------------------------|
| Acetone | 1-year immersion at room temperature |
| Acetone | 2 hours at boil |
| Benzene | 1-year immersion at room temperature |
| Benzene | 2 hours at boil |
| Benzyl alcohol | 31 days, 75°C |
| Dioxane (1,4) | 31 days, 75°C |
| Ethyl acetate | 31 days, 75°C |
| Ethyl alcohol | 31 days, 75°C |
| n-Heptane | 1-year immersion at room temperature |
| Kerosene | 1-year immersion at room temperature |
| Methyl ethyl ketone | 31 days, 75°C |
| Toluene | 31 days, 75°C |
| Trichlorethylene | 31 days, 75°C |

Miscellaneous

| | |
|-----------------------|--------------------------------------|
| Phenol | 1-year immersion at room temperature |
| Phenol (5%) | 31 days, 75°C |
| Sodium chloride (10%) | 1-year immersion at room temperature |
| Sodium sulphide (9%) | 31 days, 75°C |
| Tricresyl phosphate | 31 days, 75°C |

Disinfection tests

Gurimur® has been tested by noteworthy producers of disinfection products like “Schülke & Mayr” and “Beiersdorf”.










The result:

Gurimur® doesn't change under the influence of the tested disinfection products.

Where hygiene is essential

Gurimur® TEDLAR® (approx. 360 g/m²)

Gurimur® TEDLAR® PLUS (approx. 600 g/m²)

| | | | | | |
|------------------------------------|---|------------------------------------|---|----------------------|---|
| 100% fully washable and scrubbable |  | Resistant to chemical agents |  | Flame-retardant |  |
| High degree of lightfastness |  | Suitable for bathrooms/kitchens |  | Random match designs |  |
| Hides wall fissures |  | Highly scuff and scratch resistant |  | Easily disinfected |  |

Gurimur® TEDLAR® ist a flexible and robust wallcovering in 130 cm width which is applied as a usual wallpaper.

More advantages of Gurimur® wallcoverings

- very longlasting
- substantial tests for hygiene and resistance
- over 100 different designs for every interior decoration
- dry stripping
- no mineral fibres
- no smell
- can be overpainted
- over 30 years of experience

Gurimur® TEDLAR® in the laboratory section

Gurimur® is also successful in laboratories. The company **Actelion** in Allschwil uses for all walls only Gurimur since many years. This new construction was provided with 25'000 m² TEDLAR®.



Examples for the application of Gurimur®



Kitchens



Hotels



Bathrooms



Patient rooms



Partitions



Laboratories



Offices



Schools



Showers



Operation theatres



References / Hospital

- Paraplegiker-Zentrum Nottwil / CH



- Al Hamadi Hospital Rijad / Saudi A.



References Offices

- Palais Wilson Genf / CH (12'000 m2 Gurimur®)
(UN-headquarters for human rights)



References / Hotel

- SAS Palace Hotel in Spa / Belgium (7'000 m2 Gurimur®)



***New!* Gurimur® Digital**



With Gurimur®Digital there are no limits - you design your own wallcovering. No matter if you wish a specific colour, a special design, a fascinating picture or a company logo - with digital printing everything is possible.

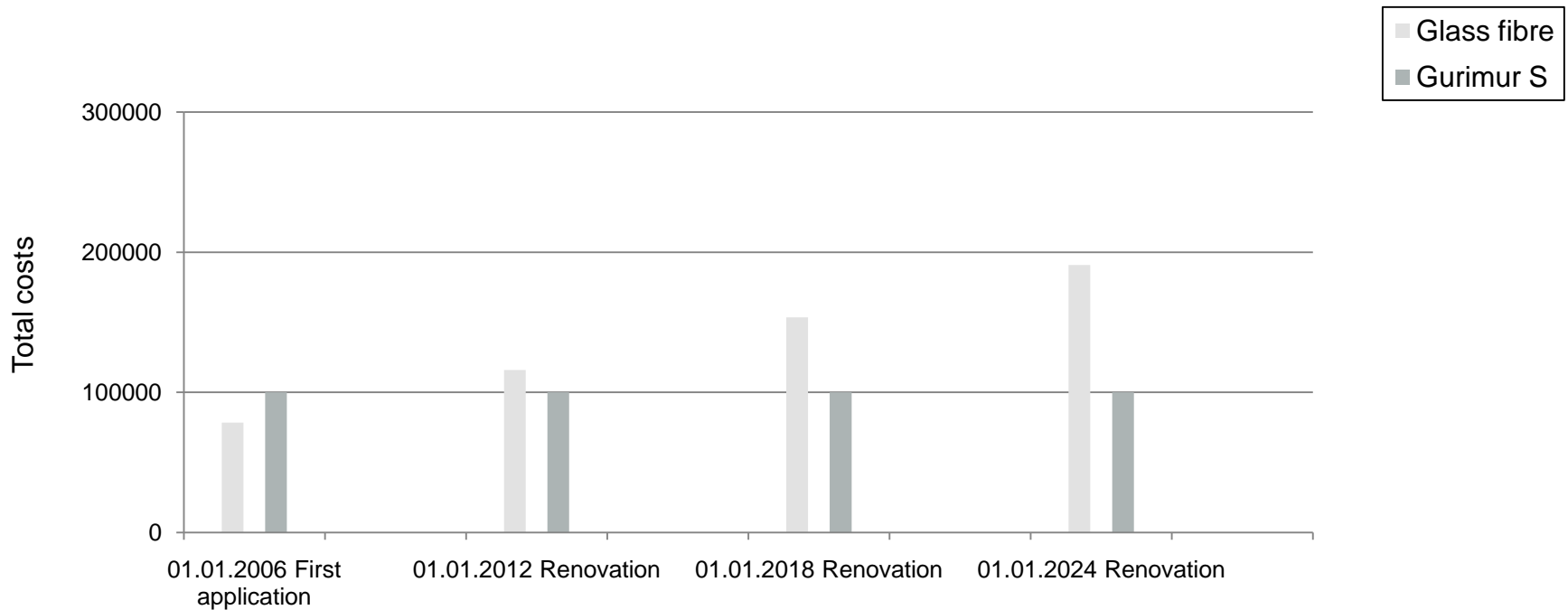
Prices Gurimur®

The following approximate price information concern project orders from approx. 500 m², inclusive application:

- **Gurimur® P**
(Vinyl with paper backing) cat. 2: Fr. 15.00 to Fr. 20.00 per m²
- **Gurimur® S**
(Vinyl with cotton backing) cat. 4 Fr. 22.00 to Fr. 28.00 per m²
- **Gurimur® TEDLAR®**
(Tedlar/Vinyl with cotton backing) cat. 7 Fr. 36.00 to Fr. 42.00 per m²
- **Gurimur® TEDLAR® PLUS**
(Tedlar/Double-vinyl with cotton backing) cat. 8 Fr. 39.00 to Fr. 55.00 per m²

Prerequisite for the validity of the prices are clean foundations which allow the normal price for wallpaper application.

Longterm calculation



Application of Gurimur® wallcoverings

Since 40 years millions of square meters have already been successfully applied.

For the expert the application of Gurimur® is routine.

The wall or the wallcovering is pasted with special glue for heavy duty vinylfilm (e.g. Ovalit T from Henkel) and applied with wall cut.

Wall cut means that it is applied overlapped. After that, the overlapping parts are cut off with a special knife. A perfect and almost invisible seam occurs.



Design and special colours

- Over 100 designs
- Countless colours
- 100 different surface structures

Gurimur® is flexible for special manufacturing. Special combinations with different designs, surface structures and colours are possible starting from 300 meters already.

Convincing through quality



And our motto:

Gurimur[®]

Quality is when the customer comes back
and not the product.

